

2 BEDROOM DUPLEX APARTMENT

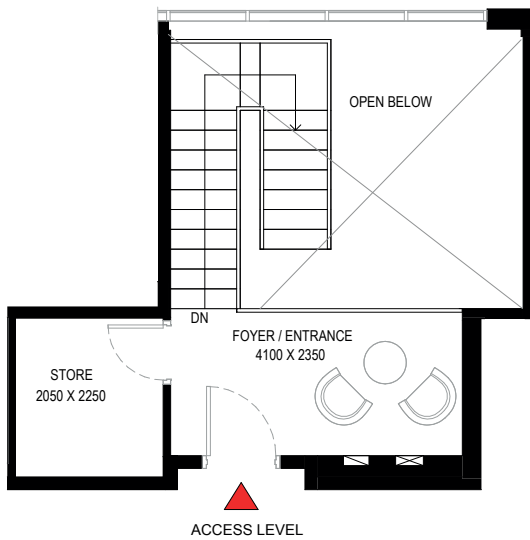
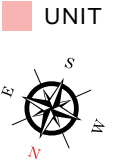
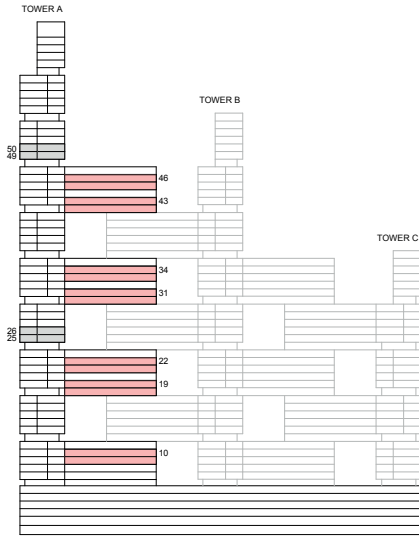
TYPE A (with store room, maid room and powder room + balcony)

TOTAL SALEABLE AREA

SUITE = 1,701.76 SQ.FT.

BALCONY = 178.96 SQ.FT.

TOTAL = 1,880.72 SQ.FT.



List of unit numbers with this unit plan:

VIEWS

Ras Al Khor, Golf Course, Amenities
A1014, A1914, A2214

Ras Al Khor, Golf Course
A3114, A3414, A4314, A4614

LOWER LEVEL

Disclaimer: 1. All dimensions are in metric, measured to wall finishes. 2. All materials, dimensions & drawings are approximate. 3. Information is subject to change without notice, at developer's absolute discretion. 4. Actual area may vary from the stated area. 5. Drawing are not to scale. 6. All images used are for illustrative purpose only and do not represent the actual size, features, specifications, fittings and furnishings. 7. The developer reserves the right to make revisions/ alterations, at its absolute discretion, without any liability whatsoever.

2 BEDROOM DUPLEX APARTMENT

TYPE A (with store room, maid room and powder room + balcony)

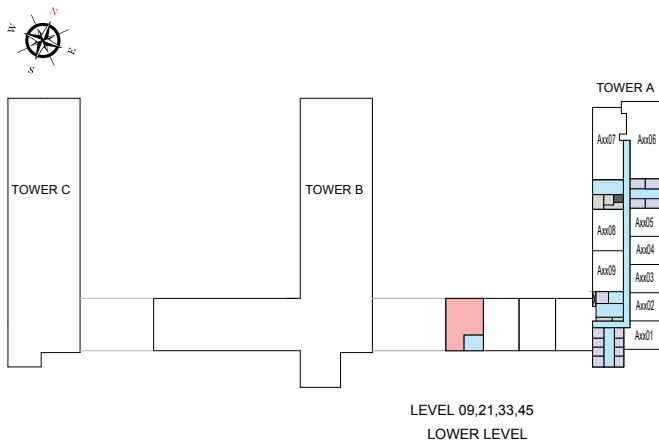
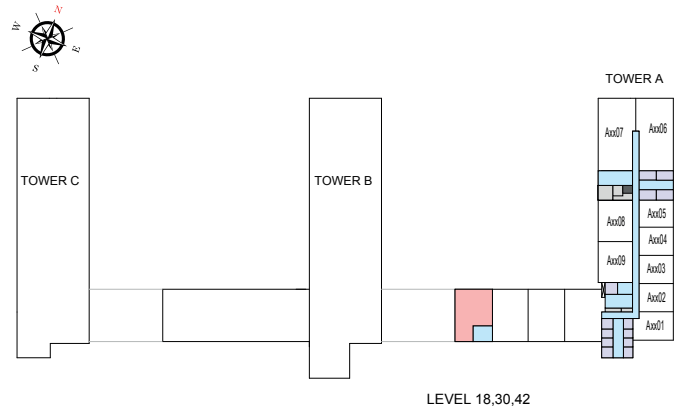
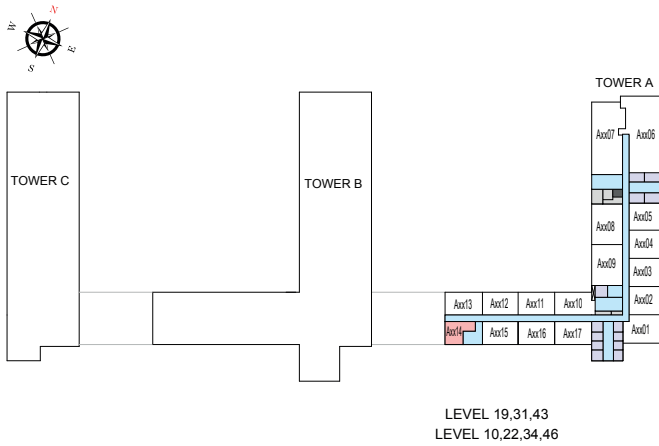
TOTAL SALEABLE AREA

SUITE = 1,701.76 SQ.FT.

BALCONY = 178.96 SQ.FT.

TOTAL = 1,880.72 SQ.FT.

 UNIT



List of unit numbers with this unit plan:

VIEWS

Ras Al Khor, Golf Course, Amenities

A1014, A1914, A2214

Ras Al Khor, Golf Course

A3114, A3414, A4314, A4614

Disclaimer: 1. All dimensions are in metric, measured to wall finishes. 2. All materials, dimensions & drawings are approximate. 3. Information is subject to change without notice, at developer's absolute discretion. 4. Actual area may vary from the stated area. 5. Drawing are not to scale. 6. All images used are for illustrative purpose only and do not represent the actual size, features, specifications, fittings and furnishings. 7. The developer reserves the right to make revisions/ alterations, at its absolute discretion, without any liability whatsoever.